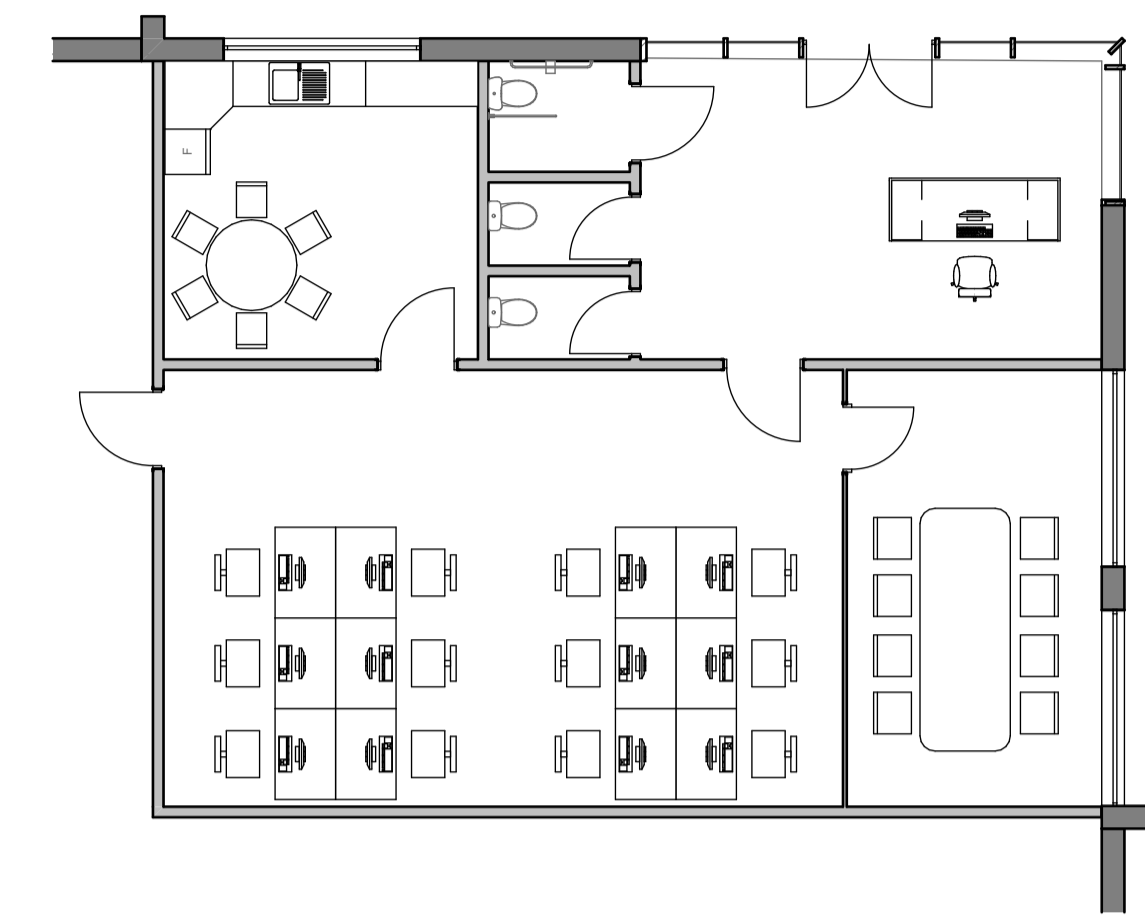
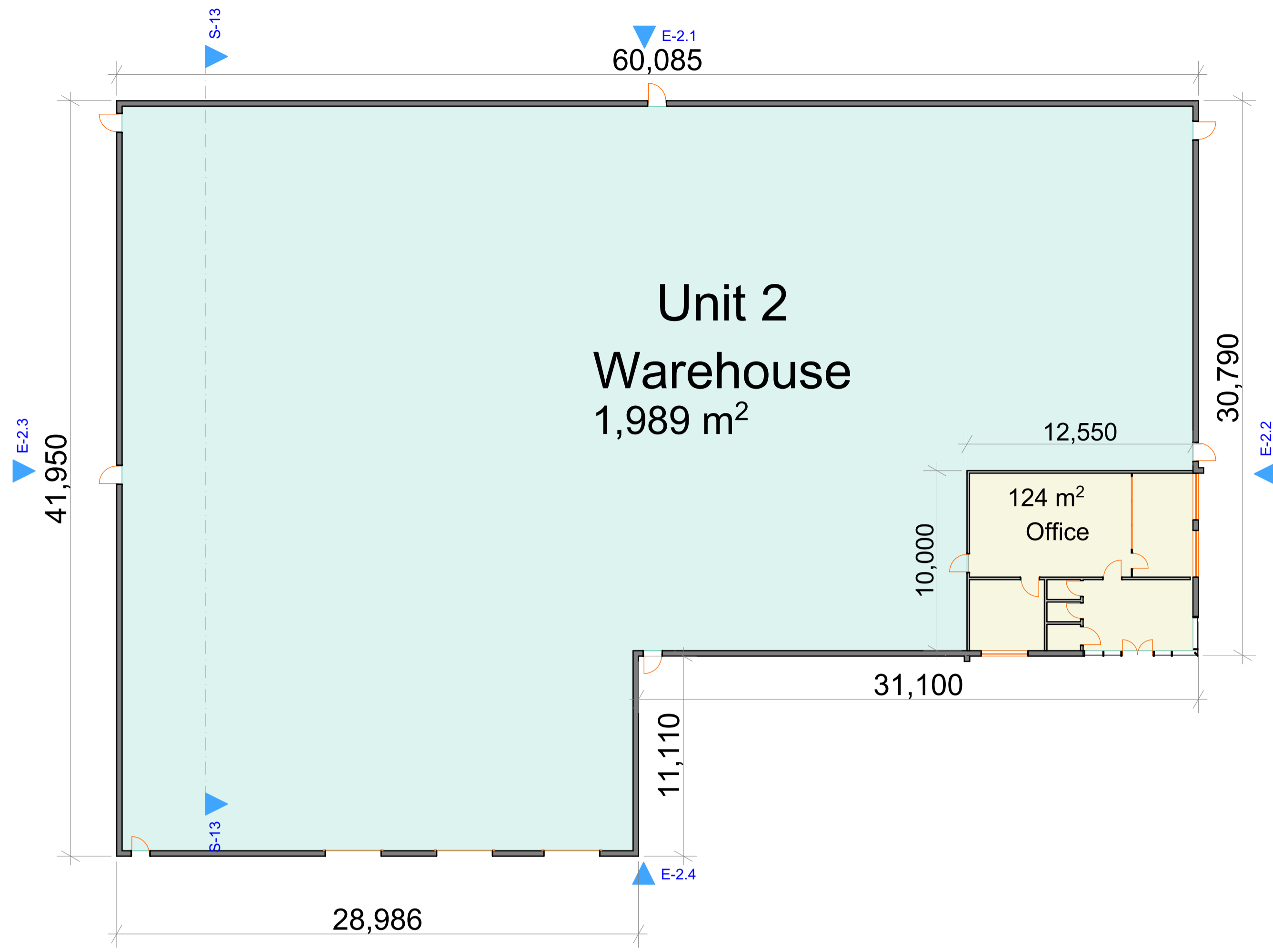


**Safety Health and Environmental Information Box**

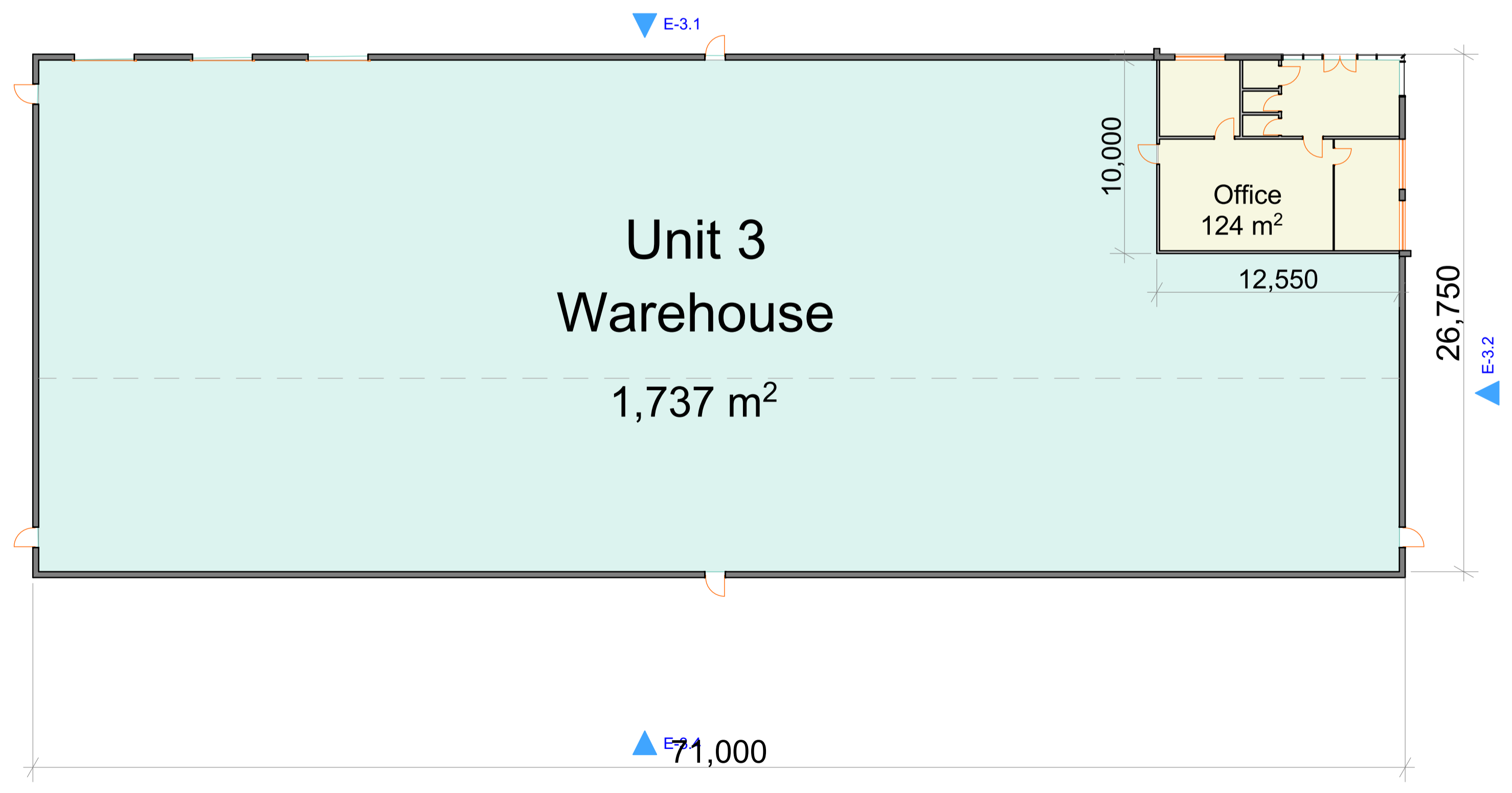
Construction Risks, Maintenance/cleaning Risks, Demolition/adaptation Risks

Notes:



Office Plan

Unit 2 Ground Floor Plan



Unit 3 Ground Floor Plan

03	Planning Issue	JM	12.04.20
02	Planning Issue		
01	Planning Issue	AS	10.06.21
RevID	Detail	Auth: JRM	Drawn: JRM



bit  
Wellington Civic Offices, Larkin Way, Wellington, Telford, Shropshire, TF1 1LX  
T: 01952 384500  
W: www.bit-group.co.uk

Project: Plot 6 Hortonwood 60

Client: Omega Lighting & Electronics Ltd

Layout Title: Unit 2 & 3 Floor Plans

Scale @ A1: 1:200, 1:100  
Status: Planning

project	originator	zone	level	type	note	number	rev
20472:bit	00	XX	DR	A_02203			03